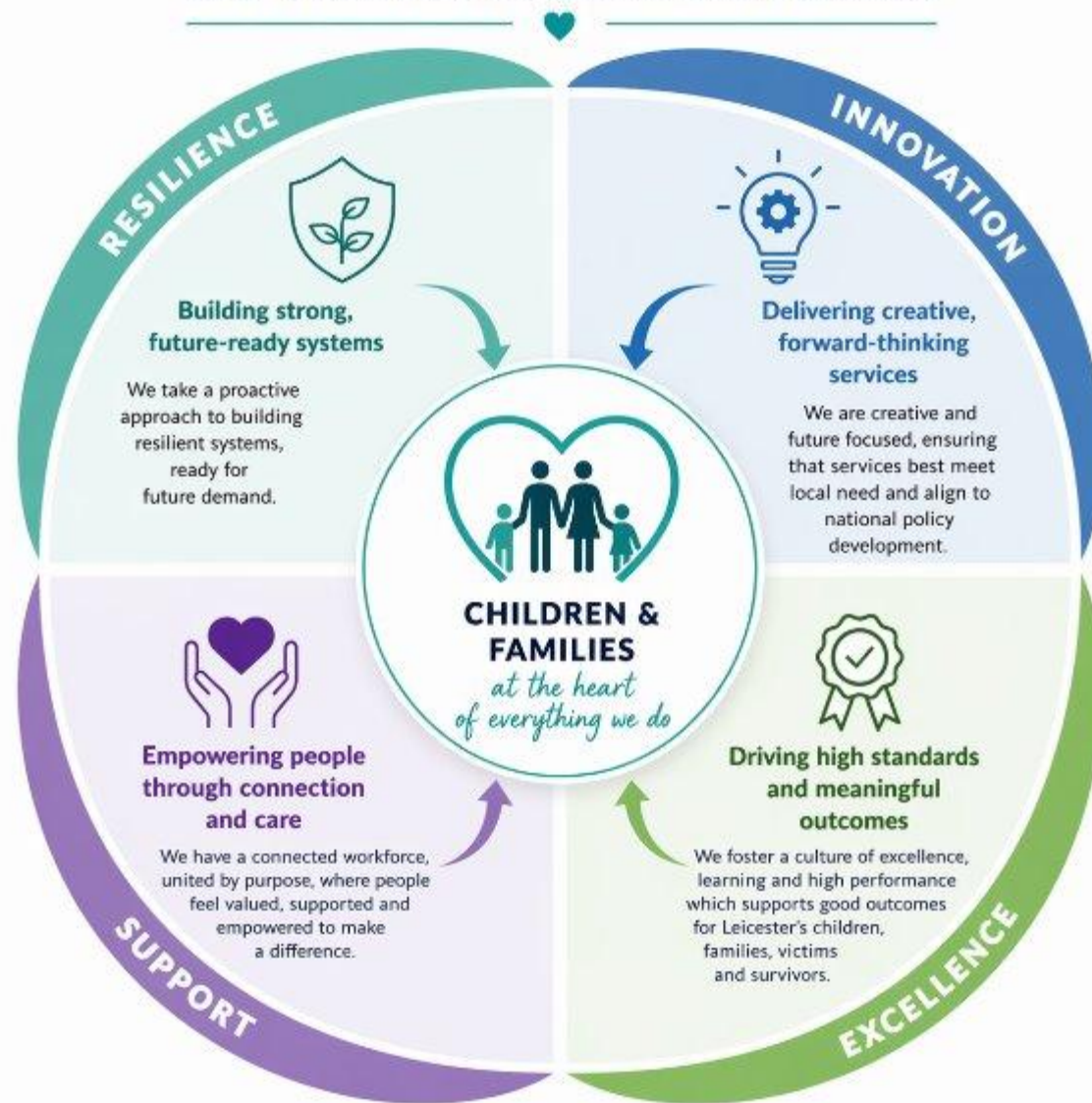
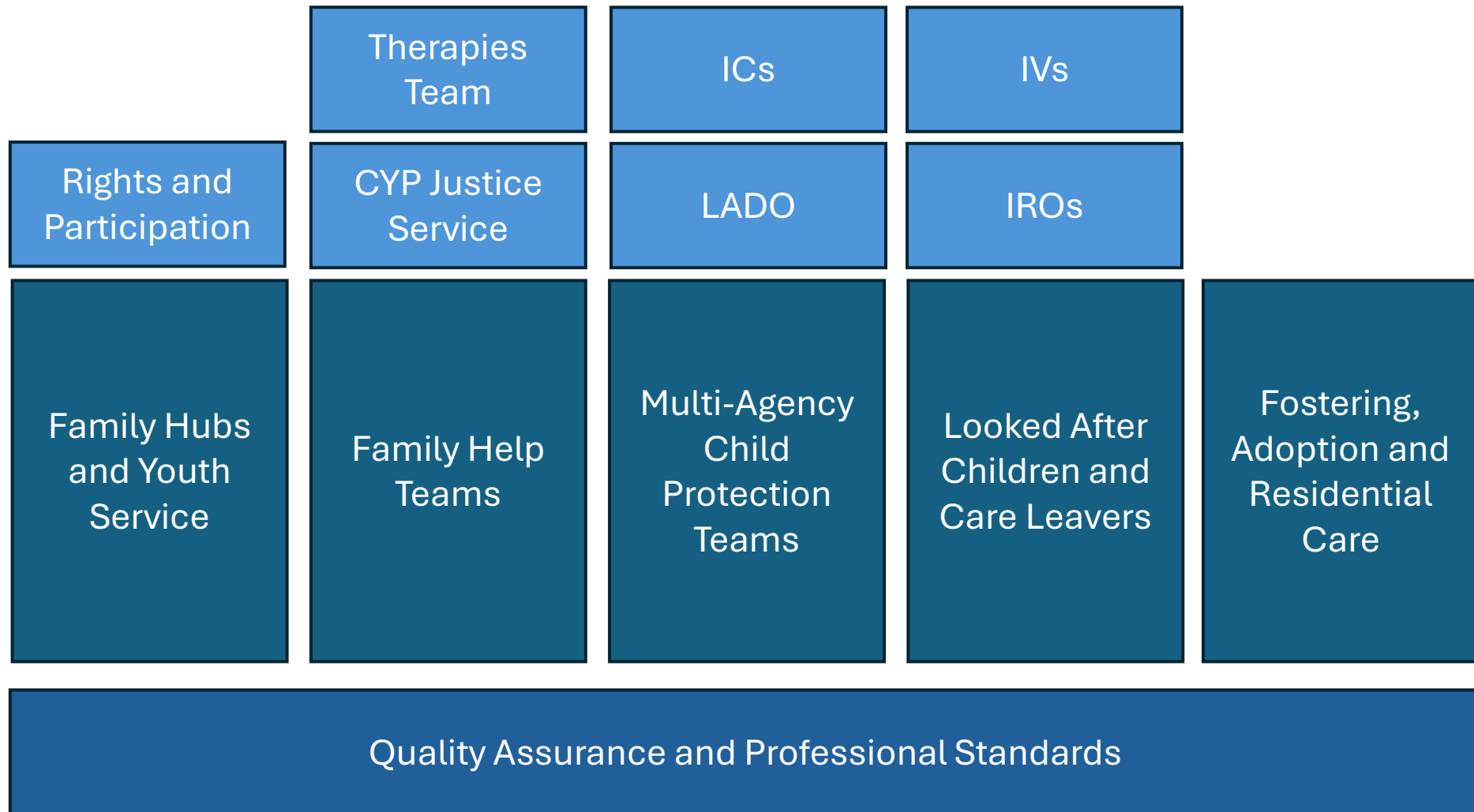


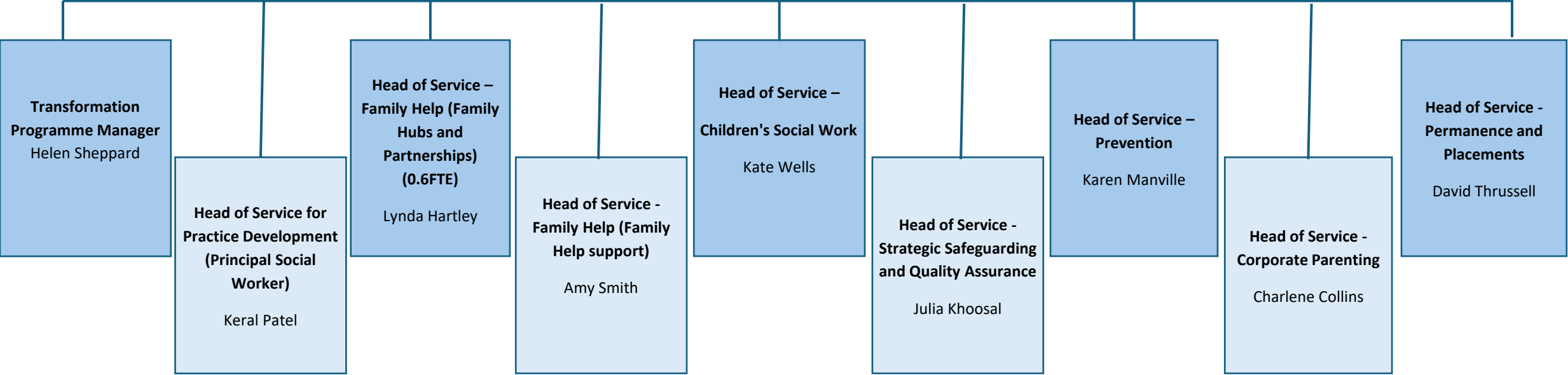
Our Vision for Children and Families



≧ *Everything we do starts and ends with them.* ≦



Divisional Director
Damian Elcock



Transformation Programme Manager
Helen Sheppard

**Head of Service for Practice Development
(Principal Social Worker)**
Keral Patel

**Head of Service – Family Help (Family Hubs and Partnerships)
(0.6FTE)**
Lynda Hartley

Head of Service - Family Help (Family Help support)
Amy Smith

Head of Service – Children's Social Work
Kate Wells

Head of Service - Strategic Safeguarding and Quality Assurance
Julia Khoosal

Head of Service – Prevention
Karen Manville

Head of Service - Corporate Parenting
Charlene Collins

Head of Service - Permanence and Placements
David Thrussell

Snapshot – 15th May 2026

- Children in the City – 91,000
- Children receiving early help - 892
- Children “In Need” (all) – 2305
- Children on a Child Protection Plan – 446
- Children “Looked After” – 630
- Care leavers age under 21 - 444
- Care leavers aged 21-25 - 234